

PRESS
RELEASE



What is FL Modular?

We sell homes that are built offsite, indoors in a factory. We currently offer 2 different models; A single family home, the “Butterfly”, and Multi-family units, “Stacked”.

The finished products are wrapped and transported to their new locations, where they are assembled either by panelized or modular construction.

These homes are built to the same specification as a site built home, only much faster. The foundation is constructed while the home is built in the factory, saving in construction time.

They are built in Florida, meeting the specifications of the Florida building codes, and are rated for 175 MPH High-Velocity wind Zone.

Our homes are certified by FPL BuildSmart, qualifying them as an energy efficient home. Enjoy savings of 30 percent on energy bills, compared to new homes that simply comply with the Florida building code. Experience greater comfort and cleaner indoor air with high-performance cooling and heating systems and sealed air ducts and much more....

What is included?

When you buy a home from FL MODULAR, you are purchasing a sustainable, affordable and durable product.

Included:

- Modular or panelized home, constructed of light gauge steel and Florida friendly Materials
- Site plans
- Installation and Transportation (up to 100 miles)
- Foundation

Not included: landscaping and stamped site plan, instalation

How long does it take?

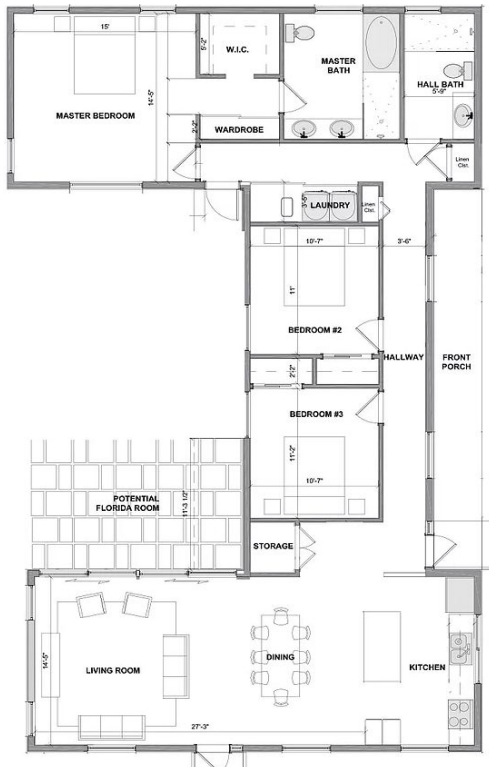
FL MODULAR homes are approved by the state of Florida. This means that city approval process will be streamlined.

Once permits are approved by the city, your home could be delivered and installed within 2 months!

What are the benefits of building Modular?

- Steel Framing Lasts Longer than Wood
- Fire Rated
- Mold Resistant
- Termite Resistant
- No unexpected costs
- Fast build time
- Energy Efficient and sustainable

The "Butterfly"



Single family Residence

2010 sw 31st ave, Fort Lauderdale, 33132

\$449,000.00

3 Bedrooms, 2 bathroom 1,650 square feet

More info



Scan with phone camera